



Photo: ST truss works

SYSTEM DESCRIPTION

The ST Roof is a tower-based structure with a pitched roof, a design that inherently offers optimum strength. The larger ST Series offers flexible possibilities for creating stage dimensions up to 30 × 20 m. Technical specifications available on request.

INCLUDING

- Tension gear and steel wires
- Structural report

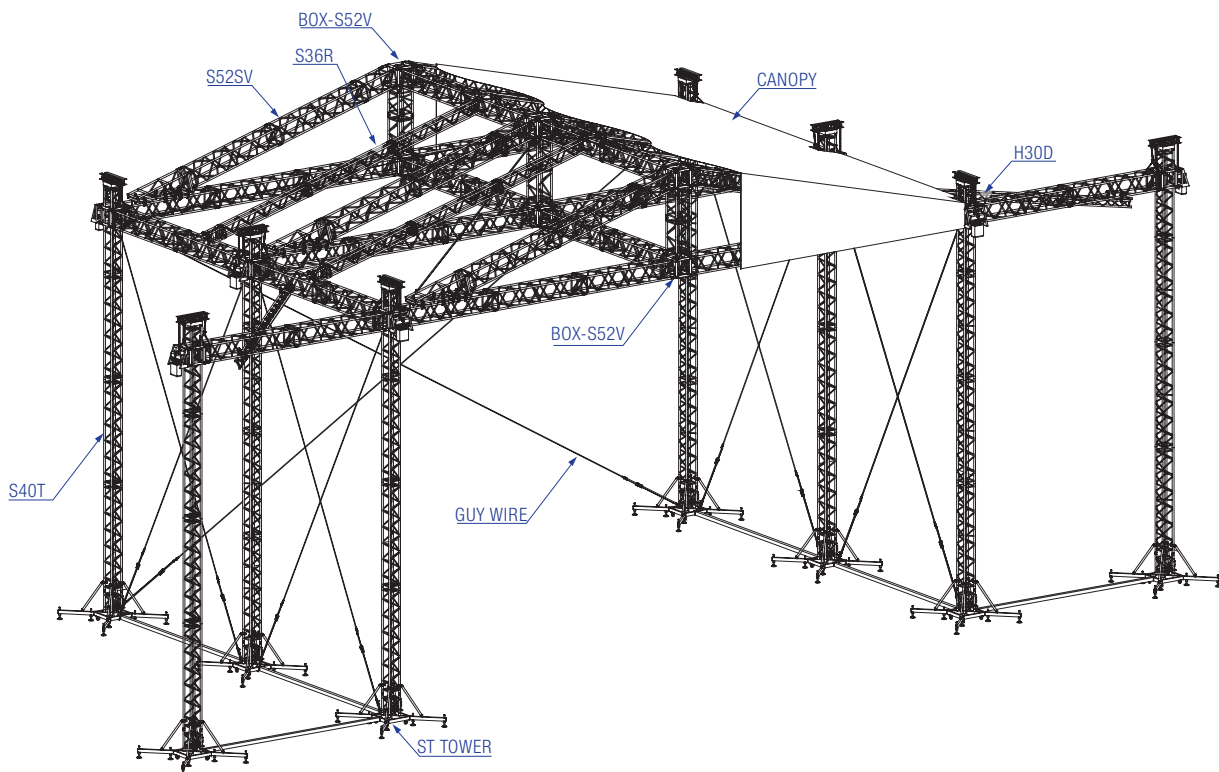
ROOF STRUCTURE	
Towers	6 x ST-tower, mast sections of S40T truss
Main grid	S52SV truss

Consult Prolyte for up-to-date information on loading capacity, wind speed, total weight and transportation volume in line with the Eurocode regulations.

OPTIONS		
Canopy	side, back and top	
Canopy colour	standard: outside grey, inside black (other colours possible)	
Soundwings	Optional (yes, loading 2000 kg each)	
Ballast	several possibilities on request from 1 - 7 ton per tower depending on construction	
Staging	Prolyte stage elements, EasyFrame B or Pro-beam combined with a scaffolding stage	
Prolyft hoist (20x14 ST roof without sound-wings) and accessories	6x PAE-1000DC-0030	1x PAE-A-FC19IN4U
	6x PAE-A-FC1000	6x PAE-A-50-010
	3x PLA-33-20	2x PLA-30-20
	4x PLA-30-10	2x PLA-34-02
	1x PAE-C8DC-10	
Prolyft hoist (20x14 ST roof with sound-wings) and accessories	8x PAE-1000DC-0030	1x PAE-A-FC19IN4U
	8x PAE-A-FC1000	8x PAE-A-50-010
	3x PLA-33-20	2x PLA-30-20
	6x PLA-30-10	2x PLA-34-02
	1x PAE-C8DC-10	

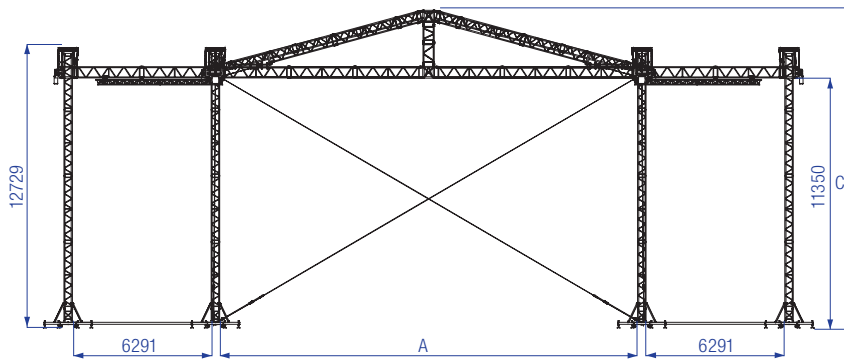


Photo: Showtech, Dubai

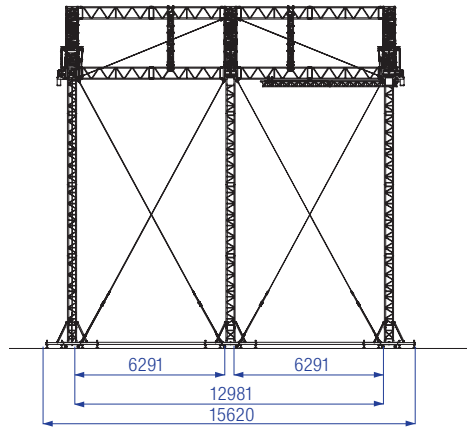




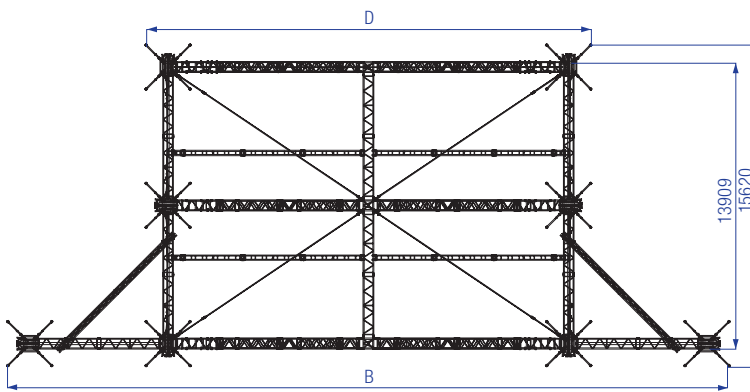
Front view



Side view



Top view

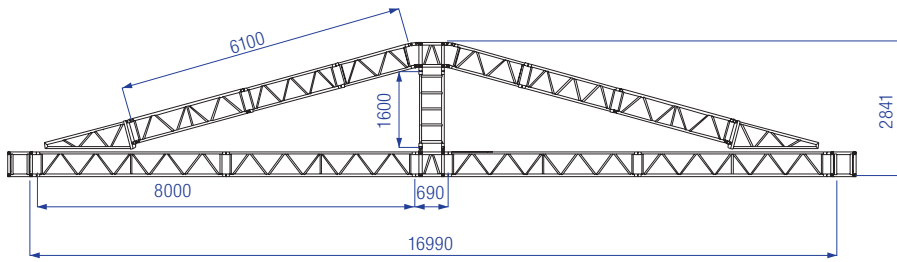


ST-ROOF SYSTEM

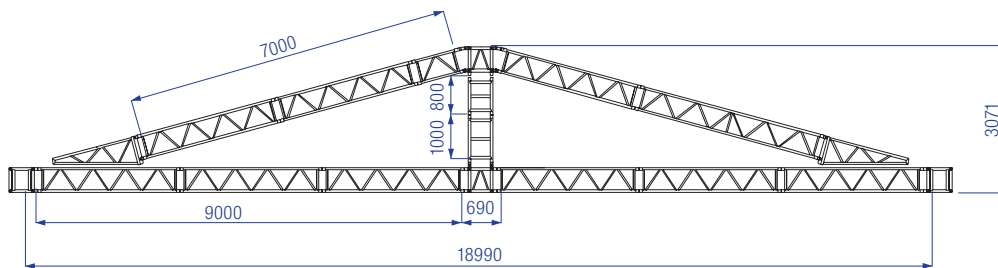
Stage measurements		A		B		C		D	
20 x 14 m	65'6" x 45'9"	20,99 m	68'8"	37,0 m	108'2"	14,70 m	48'2"	23,62 m	77'4"
18 x 14 m	59'0" x 45'9"	18,99 m	62'3"	35,0 m	114'8"	14,70 m	48'2"	21,62 m	70'9"
16 x 14 m	52'5" x 45'9"	16,99 m	55'7"	33,0 m	121'3"	14,70 m	48'2"	19,62 m	64'3"

ST ROOF

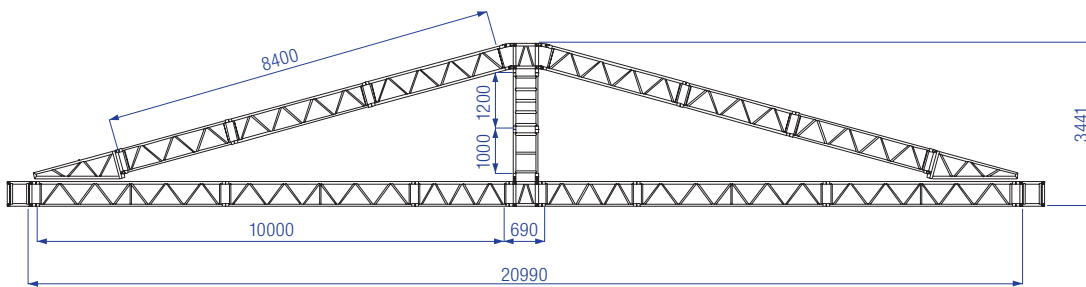
ST ROOF 16 x 14 m



ST ROOF 18 x 14 m



ST ROOF 20 x 14 m



all measurements in mm